

RefTec Refrigerant Handling Equipment

- Refrigerant Recovery
- Refrigerant Reclamation
- Noncondensable Gas Purging
- Chiller Pressurization
- Refrigerant Management

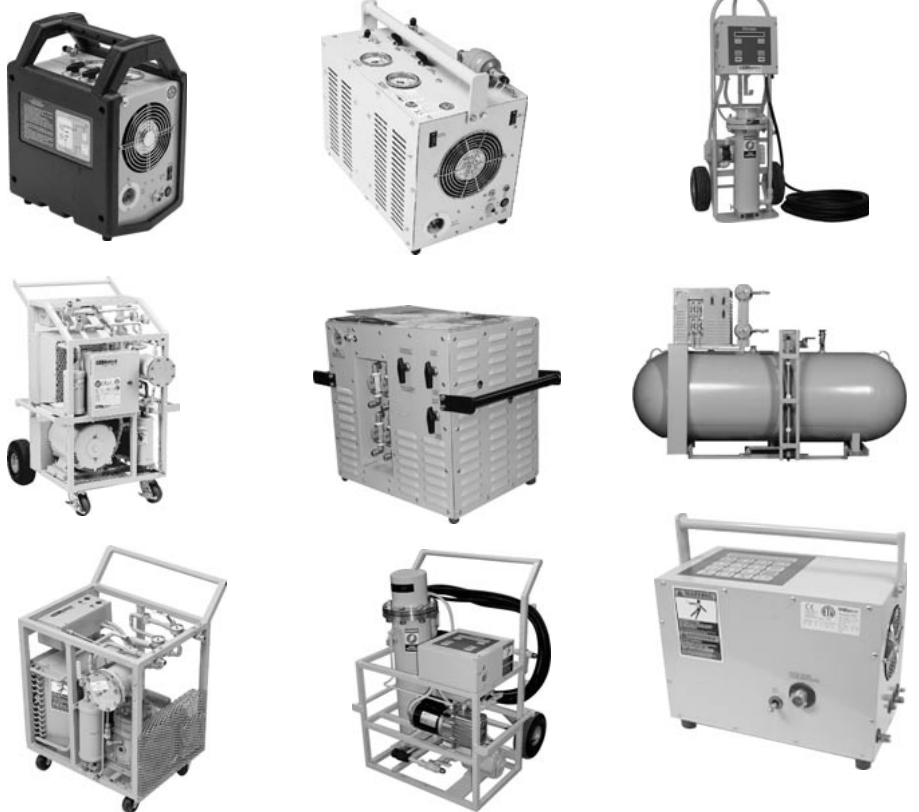




Table of Contents

Model Number Description	4
General Data - Cross-Reference	6
General Data - Voltage Utilization	9
General Data - Product	
MicroVac	10
HandiVac	11
MityVac	12
MityVac/ASME Package Unit	13
Evac Commercial	14
LoVac	15
AllVac	16
MiniPurge	19
HyperWatt	20
Enviro pump	21
General Data - Miscellaneous Accessories	
Cylinders and Storage Tanks	17
Accessories	18
General Data	
Compressor Kits/Compressor Demo Unit	22

Model Number Description

R R A A 1 1 1 A 0 A 0
 1 2 3 4 5 6 7 8 9 10 11

Refrigerant Recovery

Digits 1, 2 – Product Description
 RR = Refrigerant Recovery

Digit 3 – Model Identifier

A = MicroVac
 B = HandiVac
 C = MityVac
 D = Evac Commercial
 F = LoVac
 G = AllVac
 J = Pump Out Unit with 250 Gallon Tank
 K = Pump Out Unit with 500 Gallon Tank
 M = EnviroPump

Digit 4 – Development Sequence
 A = First development

Digit 5 – Condenser Type
 1 = Air Cooled
 3 = Air/Water Cooled

Digit 6 – Control Type
 1 = Electromechanical
 2 = Microprocessor

Digit 7 – Connection Type

1 = ¼" flare
 2 = ½" flare
 3 = ¾" flare w/ball valve
 5 = Quick Connects on unit and hoses

Digit 8 – Unit Voltage (voltage/hz/phase)

A = 115/60/1, 110/50/1
 B = 230/60/1, 220/50/1
 C = 460/60/3, 415/50/3
 D = 575/60/3, 550/50/3
 E = 230/60/3, 220/50/3
 F = 575/60/3
 G = 230-460/60/1, 220-415/50/1

Digit 9 – Safety Features

0 = Open
 1 = Float Cable Connection
 2 = Low Pressure Shut-Off
 3 = Float cable connection, LP shut-off

Digits 10, 11 – Design Sequence
 A0 = First Design Sequence

M P R A 0 0 0 A 0 A 0
 1 2 3 4 5 6 7 8 9 10 11

MiniPurge

Digits 1, 2, and 3 – Product Description
 MPR = MiniPurge

Digit 4 – Development Sequence
 A = First development

Digits 5, 6, 7 – Open
 0 = Open

Digit 8 – Unit Voltage (voltage/hz/phase)

A = 115/60/1, 110/50/1
 B = 230/60/1, 220/50/1

Digit 9 – Open
 0 = Open

Digit 10,11 – Design Sequence
 A0 = First Design Sequence

H **Y** **P** **A** **1** **0** **0** **A** **0** **A** **0**
1 2 3 4 5 6 7 8 9 10 11

HyperWatt

Digits 1, 2, and 3 – Product Description
HYP = HyperWatt

Digit 4 – Development Sequence
A = First development

Digit 5 – Unit Configuration
1 = Service Cart
2 = Permanent Mount

Digits 6, 7 – Open
0 = Open

Digit 8 – Unit Voltage (voltage/hz/phase)
A = 230-460/60/3, 220-415/50/3
B = 575/60/3

Digit 9 – Open
0 = Open

Digits 10, 11 – Design Sequence
A0 = First Design Sequence

General Data – Cross Reference

Table 1 – RefTec Refrigerant Handling Equipment

	ServiceFirst Item Number	ServiceFirst Model No.	RefTec Model No.	description	features	features	
MicroVac	TOL01133	RRAA111A1A0	MVS-115-F	115/60/1,110/50/1,0.5Hp,15A	Float Cable Connection		
	TOL01135	RRAA111A3A0	MVS-115-F-L	115/60/1,110/50/1,0.5Hp,15A	Float Cable Connection, LP Shut-off		
	TOL01137	RRAA111B1A0	MVS-240-F	220/50/1, 0.5Hp, 10A	Float Cable Connection		
	TOL01139	RRAA111B3A0	MVS-240-F-L	220/50/1, 0.5Hp, 10A	Float Cable Connection, LP Shut-off		
HandiVac	TOL01144	RRBA111A1A0	RTO-500-115-F	115/60/1, 110/50/1, (2) 0.5Hp, 15A	Float Cable Connection		
	TOL01145	RRBA111B1A0	RTO-500-240-F	220/50/1, (2) 0.5Hp, 10A	Float Cable Connection		
MityVac	TOL01152	RRCA112A0A0	MRH-115-E	115/60/1, 110/50/1, 1.5Hp, 20A	Electromechanical Controls		
	TOL01154	RRCA112B0A0	MRH-240-E	230/60/1, 220/50/1, 1.5Hp,15A	Electromechanical Controls		
Evac Comm	TOL01159	RRDA113E0A0	CRH-A-230-3-E	230/60/3, 220/50/3, 3Hp,15A	Electromechanical Controls, Air Cooled	3/4" Flare with ball valve	
	TOL01161	RRDA113B0A0	CRH-A-240-1-E	230/60/1, 220/50/1, 3Hp,20A	Electromechanical Controls, Air Cooled	3/4" Flare with ball valve	
	TOL01163	RRDA113C0A0	CRH-A-460-3-E	460/60/3, 415/50/3,3Hp,15A	Electromechanical Controls, Air Cooled	3/4" Flare with ball valve	
	TOL01165	RRDA113G0A0	CRH-A-D24-1-E	230-460/60/1,220-415/50/1,5Hp,30/20A	Electromechanical Controls, Air Cooled	3/4" Flare with ball valve	
	TOL01167	RRDA113F0A0	CRH-A-575-3-E	575/60/3 3Hp,10A	Electromechanical Controls, Air Cooled	3/4" Flare with ball valve	
	TOL01169	RRDA313E0A0	CRH-W-230-3-E	230/60/3, 220/50/3, 3Ph,3Hp,15A	Electromechanical Controls, Air/Water Cooled	3/4" Flare with ball valve	
	TOL01171	RRDA313B0A0	CRH-W-240-1-E	230/60/1, 220/50/1,3Hp,20A	Electromechanical Controls, Air/Water Cooled	3/4" Flare with ball valve	
	TOL01173	RRDA313C0A0	CRH-W-460-3-E	460/60/3, 415/50/3,3Hp,15A	Electromechanical Controls, Air/Water Cooled	3/4" Flare with ball valve	
	TOL01175	RRDA313F0A0	CRH-W-575-3-E	575/60/3 3Hp,10A	Electromechanical Controls, Air/Water Cooled	3/4" Flare with ball valve	
	TOL01177	RRDA313G0A0	CRH-W-D24-1-E	230-460/60/1,220-415/50/1,5Hp,30/20A	Electromechanical Controls, Air/Water Cooled	3/4" Flare with ball valve	
	AllVac	TOL01835	RRGA113E0A0	ARH-A-230-3-E	220-240V,50/60Hz,3Ph,3Hp,15A	Electromechanical Controls, Air Cooled	3/4" Flare with ball valve
		TOL01836	RRGA113B0A0	ARH-A-240-1-E	220-240V,50/60Hz,1Ph,3Hp,20A	Electromechanical Controls, Air Cooled	3/4" Flare with ball valve
		TOL01837	RRGA113C0A0	ARH-A-460-3-E	360-575V,50/60Hz,3Ph,3Hp,15A	Electromechanical Controls, Air Cooled	3/4" Flare with ball valve
TOL01838		RRGA113F0A0	ARH-A-575-3-E	575V,60Hz,3Ph,3Hp,10A	Electromechanical Controls, Air Cooled	3/4" Flare with ball valve	
TOL01839		RRGA113G0A0	ARH-A-D24-1-E	230/460V,50/60Hz,1Ph,5Hp,30/20A	Electromechanical Controls, Air Cooled	3/4" Flare with ball valve	
TOL01840		RRGA313E0A0	ARH-W-230-3-E	220-240V,50/60Hz,3Ph,3Hp,15A	Electromechanical Controls, Air/Water Cooled	3/4" Flare with ball valve	
TOL01841		RRGA313B0A0	ARH-W-240-1-E	220-240V,50/60Hz,1Ph,3Hp,20A	Electromechanical Controls, Air/Water Cooled	3/4" Flare with ball valve	
TOL01842		RRGA313C0A0	ARH-W-460-3-E	360-480V,50/60Hz,3Ph,3Hp,15A	Electromechanical Controls, Air/Water Cooled	3/4" Flare with ball valve	
TOL01843		RRGA313F0A0	ARH-W-575-3-E	575V,60Hz,3Ph,3Hp,10A	Electromechanical Controls, Air/Water Cooled	3/4" Flare with ball valve	
TOL01844		RRGA313G0A0	ARH-W-D24-1-E	230/460V,50/60Hz,1Ph,5Hp,30/20A	Electromechanical Controls, Air/Water Cooled	3/4" Flare with ball valve	

Table 1 – RefTec Refrigerant Handling Equipment (continued)

	ServiceFirst Item Number	ServiceFirst Model No.	RefTec Model No.	description	features	features
LoVac	TOL01189	RRFA113A0A0	CRL-A-115-E	115/60/1,110/50/1, 2.0Hp, 20A	Electromechanical Controls, Air Cooled	3/4" Flare with ball valve
	TOL01190	RRFA115A0A0	CRL-A-115-E-QC	115/60/1,110/50/1, 2.0Hp, 20A	Electromechanical Controls, Air Cooled	Quick Connects on unit and hoses
	TOL01193	RRFA113B0A0	CRL-A-240-E	230/60/1, 220/50/1, 2.0Hp, 15A	Electromechanical Controls, Air Cooled	3/4" Flare with ball valve
	TOL01194	RRFA115B0A0	CRL-A-240-E-QC	230/60/1, 220/50/1, 2.0Hp, 15A	Electromechanical Controls, Air Cooled	Quick Connects on unit and hoses
	TOL01197	RRFA313A0A0	CRL-W-115-E	115/60/1,110/50/1, 2.0Hp, 20A	Electromechanical Controls, Air/Water Cooled	3/4" Flare with ball valve
	TOL01198	RRFA315A0A0	CRL-W-115-E-QC	115/60/1,110/50/1, 2.0Hp, 20A	Electromechanical Controls, Air/Water Cooled	Quick Connects on unit and hoses
	TOL01201	RRFA313B0A0	CRL-W-240-E	230/60/1, 220/50/1, 2.0Hp, 15A	Electromechanical Controls, Air/Water Cooled	3/4" Flare with ball valve
	TOL01202	RRFA315B0A0	CRL-W-240-E-QC	230/60/1, 220/50/1, 2.0Hp, 15A	Electromechanical Controls, Air/Water Cooled	Quick Connects on unit and hoses
MiniPurge	TOL01227	MPRA000A0A0	MPS-115	115/60/1, 110/50/1, 0.5Hp, 15A		
	TOL01228	MPRA000B0A0	MPS-240	230/60/1, 220/50/1, 0.5Hp, 15A		
HyperWatt	TOL01242	HYPA100B0A0	HPS-C-575-3	575/60/3, 40A	Service Cart	
	TOL01243	HYPA100A0A0	HPS-C-D24-3	230-460/60/3,220-415/50/3, 20/40A	Service Cart	
	TOL01244	HYPA200B0A0	HPS-P-575-3	575/60/3, 40A	Permanent Mount	
	TOL01245	HYPA200A0A0	HPS-P-D24-3	230-460/60/3,220-415/50/3, 20/40A	Permanent Mount	
EnviroPump	TOL01736	RRMA123G0A0	EPS-D24-3	230-460/60/3, 220-415/50/3, 20/40A		3/4" Flare with ball valve
	TOL01737	RRMA125G0A0	EPS-D24-3-QC	230-460/60/3, 220-415/50/3, 20/40A		Quick Connects
	TOL01738	RRMA123F0A0	EPS-575-3	575/60/3, 40A		3/4" Flare with ball valve
	TOL01739	RRMA125F0A0	EPS-575-3-QC	575/60/3, 40A		Quick Connects

Table 2 - RefTec Complete Pump-Out and Storage Package

	ServiceFirst Item Number	ServiceFirst Model Number	RefTec Model number	Capacity/ Cooling	Power Options
MityVac/ASME Package Unit	TOL01792	RRJA112A0A0	MRH-115-A-250	250-gal/Air	103-127V,50/60Hz,1Ph,1.5Hp,20A
	TOL01793	RRJA112B0A0	MRH-240-A-250	250-gal/Air	220-240V,50/60Hz,1Ph,1.5Hp,15A
	TOL01794	RRKA112A0A0	MRH-115-A-500	500-gal/Air	103-127V,50/60Hz,1Ph,1.5Hp,20A
	TOL01795	RRKA112B0A0	MRH-240-A-500	500-gal/Air	220-240V,50/60Hz,1Ph,1.5Hp,15A
	TOL01796	RRJA312A0A0	MRH-115-W-250	250-gal/Water	103-127V,50/60Hz,1Ph,1.5Hp,20A
	TOL01797	RRJA312B0A0	MRH-240-W-250	250-gal/Water	220-240V,50/60Hz,1Ph,1.5Hp,15A
	TOL01798	RRKA312A0A0	MRH-115-W-500	500-gal/Water	103-127V,50/60Hz,1Ph,1.5Hp,20A
	TOL01799	RRKA312B0A0	MRH-240-W-500	500-gal/Water	220-240V,50/60Hz,1Ph,1.5Hp,15A

Table 3 – RefTec Accessories

	ServiceFirst Item Number	RefTec Model No.	description	features	features
Cylinders	CYL00178	CYL-1000	1,000-lb capacity, 3/4" ports	3/4" Flare with Ball Valves	
	CYL00179	CYL-1000-LS	1,000-lb capacity, 3/4" ports	3/4" Flare with Ball Valves	Liquid Switch
	CYL00180	CYL-1000-QC	1,000-lb capacity, 3/4" ports	Quick Connects	
	CYL00181	CYL-1000-LS-QC	1,000-lb capacity, 3/4" ports	Quick Connects	Liquid Switch
	CYL00182	CYL-250	250-lb capacity, 3/4" ports	3/4" Flare with Ball Valves	
	CYL00183	CYL-250-LS	250-lb capacity, 3/4" ports	3/4" Flare with Ball Valves	Liquid Switch
	CYL00184	CYL-250-QC	250-lb capacity, 3/4" ports	Quick Connects	
	CYL00185	CYL-250-LS-QC	250-lb capacity, 3/4" ports	Quick Connects	Liquid Switch
	CYL00186	—	50-lb capacity, 1/4" ports		
	CYL00187	—	50-lb capacity, 1/4" ports	Liquid Switch	
	CYL00188	—	30-lb capacity, 1/4" ports		
CYL00189	—	30-lb capacity, 1/4" ports	Liquid Switch		
ASME Tank	TNK00837	ASME-250-075-HP	250-Gallon	3/4" Flare with Ball Valves	High Pressure
	TNK00838	ASME-250-075-LP	250-Gallon	3/4" Flare with Ball Valves	Low Pressure
	TNK00839	ASME-250-075-LP-QC	250-Gallon	3/4" Ports with Quick Connects	Low Pressure
	TNK00842	ASME-500-075-HP	500-Gallon	3/4" Flare with Ball Valves	High Pressure
	TNK00843	ASME-500-075-LP	500-Gallon	3/4" Flare with Ball Valves	Low Pressure
TNK00844	ASME-500-075-LP-QC	500-Gallon	3/4" Ports with Quick Connects	Low Pressure	
Cable	CAB00880	FVC-006	6-ft Float Cable and 3 Pin (BH) Connector		
	CAB00881	FVC-012	12-ft Float Cable and 3 Pin (BH) Connector		
	CAB00882	FVC-3T4	3 pin (BH) to 4 pin (AMP) connector adapter		
Manifold	MFD00901	RM-075-6	Six 3/4" flare ports w/ball valves		
	MFD00902	RM-050-6	Six 1/2" flare ports w/ball valves		
Hoses	HSE01126	—	1/4" x 10-ft, no isolation		
	HSE01347	025-006-B-HP-FB	1/4" x 6-ft, w/ball valves		
	HSE01348	025-006-R-HP-FB	1/4" x 6-ft, w/ball valves		
	HSE01128	025-020-HP	1/4" x 20-ft, no isolation		
	HSE01129	025-020-HP-FB	1/4" x 20-ft, w/ball valves		
	HSE01130	—	3/8" x 10-ft, no isolation		
	HSE01131	038-010-HP-FB	3/8" x 10-ft, w/ball valves		
	HSE01132	—	3/8" x 20-ft, no isolation		
	HSE01133	038-020-HP-FB	3/8" x 20-ft, w/ball valves		
	HSE01214	—	1/2" x 10-ft, no isolation		
	HSE01135	050-010-HP-FB	1/2" x 10-ft, w/ball valves		
	HSE01136	—	1/2" x 20-ft, no isolation		
	HSE01137	050-020-HP-FB	1/2" x 20-ft, w/ball valves		
	HSE01252	—	3/4" x 10-ft, no isolation		
	HSE01139	075-010-HP-FB	3/4" x 10-ft, w/ball valves		
	HSE01140	075-010-HP-QC	3/4" x 10-ft, quick connects		
	HSE01253	—	3/4" x 20-ft, no isolation		
HSE01142	075-020-HP-FB	3/4" x 20-ft, w/ball valves			
HSE01143	075-020-HP-QC	3/4" x 20-ft, quick connects			
Quick Connects	CON00996	QC-075-M	3/4" Male Quick Connect Fitting		
	CON00997	QC-075-F	3/4" Female Quick Connect Fitting		
Filters	DHY00816	—	3 cubic inch, 1/4" flare, in-line	fits: MVS-500	
	FLR02746	FD-005-38	5 cubic inch, 3/8" flare, in-line	fits: HandiVac	
	FLR02742	FD-030-50	30 cubic inch, 1/2" flare, in-line	fits: MRH-500, MRH-1000	
	FLR02745	FD-048-CR	48 cubic inch, replaceable core	fits: CRH-500, CRL-500, IRH-1000, EHP-1000	
Band Heaters	HTR04356	HB-10X094-1-1880	Heater Band for 30" dia. 250-gal ASME and 1000-lb DOT tanks	10" X 94", 1880W, 120V- 100 DEG. F CUT OFF	
	HTR04357	HB-10X094-2-1880	Heater Band for 30" dia. 250-gal ASME and 1000-lb DOT tanks	10" X 94", 1880W, 240V- 100 DEG. F CUT OFF	
	HTR04358	HB-10X115-1-1880	Heater Band for 37" dia. 500-gal ASME tank	10" X 115", 1880W, 120V- 100 DEG. F CUT OFF	
	HTR04359	HB-10X115-2-1880	Heater Band for 37" dia. 500-gal ASME tank	10" X 115", 1880W, 240V- 100 DEG. F CUT OFF	

General Data – Voltage Utilization

Unit Listed Nominal Voltages	Voltage Utilization Range (VAC)
60 hz	
115	104 - 127
230	208 - 254
460	416 - 508
575	520 - 635
230-460 (dual voltage)	208-254 / 416-508
460-575 (dual voltage)	416-508 / 520-635
50 hz	
110	99 - 121
220	198 - 242
415	373 - 457
550	495 - 605
220-415 (dual voltage)	198-242 / 373-457
415-550 (dual voltage)	373-457 / 495-605
380	342 - 418

MicroVac



MicroVac combines a revolutionary oil-less compressor with greater condensing capacity to provide unmatched refrigerant recovery performance.

Only MicroVac's patented compressor has built-in anti-slugging protection that automatically prevents liquid from harming the compressor during direct liquid transfer. Its unique self cooling design generates less heat and discharge pressure, which promotes faster transfer rates at higher ambient temperatures.

MicroVac's higher fan capacity and smarter component layout generates over twice the air flow through its cabinet versus some other units, for the highest condensing capacity in its class.

This compact unit weighs only 30-lbs and is easily carried up a ladder by its included shoulder strap.

Higher ARI Certified Rates:	R22 lb/min	R410a lb/min
Push/pull	11.20	13.84
Direct Liquid	3.81	4.39
Vapor	0.24	0.31
High Temp. Vapor	0.31	N/A

Speed Enhancing Features

- Patented oil-less compressor
- Moves over twice the air velocity through its cabinet vs. other units for higher condensing capacity
- Self evacuates before and after recovery to prevent contamination

Less Maintenance

- Oil-free compressor lessens maintenance hassles. Easily switches between R12, R22, R134a, R500, R502, R410a, R409, MP39 and other high pressure refrigerants and blends.
- Better air circulation properly cools the compressor motor and head as well as other internal components for longer service life.

Safety Features

- High pressure shut off at 450-psi
- Low pressure shut-off at 15-in. vacuum Hg (opt.)
- Tank float cable connection

Included with Purchase

- Shoulder Strap
- One 3-cubic inch in-line filter
- Power cord adapter (Overseas models only)

Accessories (see page 18)

- 6, 10, and 20-ft 1/4-in. Hoses
- 30-lb. and 50-lb. recovery tanks
- Spare 3-cubic inch in-line filters
- 6-ft Tank Float Cable

Note: Unit is equipped with a 3 prong flanged inlet. Maximum length of 100-ft 12-gauge power cord recommended.

Specifications

	R-22	R410a
Push/Pull	11.20-lb/min	13.84-lb/min
Direct Liquid	3.81-lb/min	4.39-lb/min
Vapor Rate	0.24-lb/min	0.31-lb/min
High Temp. Vapor	0.31-lb/min	N/A
Weight	30-lbs (12.3kg)	
Motor	0.5Hp	
Connections	1/4-in. Flare	
Dimensions (LxWxH)	13.5-in. x 9-in. x 16.75-in.	

Recovers Class III, IV and V refrigerants: R12, R22, R134A, R401A, R401B, R401C, R402A, R402B, R404A, R406A, R407A, R407B, R407C, R407D, R408A, R409A, R410A, R411A, R411B, R412A, R500, R502, R507, R509.

ServiceFirst Item Number	RefTec Model Number	Power Options	Features
TOL01133	MVS-115-F	115/60/1, 110/50/1, 0.5Hp, 15A	Float Cable Connection
TOL01135	MVS-115F-L	115/60/1, 110/50/1, 0.5Hp, 15A	Float Cable Connection, LP Shut-off
TOL01137	MVS-240-F	220/50/1, 0.5Hp, 10A	Float Cable Connection
TOL01139	MVS-240-F-L	220/50/1, 0.5Hp, 10A	Float Cable Connection, LP Shut-off

HandiVac



No oil-less refrigerant recovery unit transfers refrigerant as quickly as HandiVac. Its dual 0.5Hp oil-less compressors accelerate refrigerant recovery on commercial cooling systems.

HandiVac's patented oil-less compressors automatically prevent liquid from harming their valves during direct liquid transfer. Its unique self cooling design generates less heat and discharge pressure, which promotes faster transfer rates at higher ambient temperatures.

Dual fans and condensing coils remove more heat from recovered refrigerant to ensure fast recovery on hotter days or larger volume cooling systems.

Higher ARI

Certified Rates:	R22 lb/min
Push/pull	25-lb/min
Direct Liquid	7.80-lb/min
Vapor	0.62-lb/min

Speed Enhancing Features

- Twin 0.5Hp compressors, dual fans and condensing coils provide commercial grade recovery capacity.
- Self evacuates before and after recovery to prevent contamination.

Less Maintenance

- Oil-free compressors lessen maintenance hassles. Easily switches between R12, R22, R134a, R500, R502, R410a, R409, MP39 and other high pressure refrigerants and blends.
- High air circulation properly cools the compressor motors and heads as well as other internal components for longer service life.

Safety Features

- High pressure shut off at 450-psi
- Automatic low pressure shut-off at 15-in. Hg
- Tank float cable connection

Included with Purchase

- One 5-cubic inch in-line filter
- Power cord adapter (Overseas model only)
- 6-ft tank float cable
- Two 3/8"-1/4" hose adapters
- Two ea. 1/2"-3/8" and 3/8"-1/4" reducing adapters

Accessories (see page 18)

- 6-ft, 10-ft, and 20-ft hoses in diameters of 1/4", 3/8", and 1/2".
- 30, 50, 250-lb recovery tanks
- Spare 5-cubic-inch in-line filters

Note: Unit is equipped with a 3 prong flanged inlet. Maximum length of 100-ft 12-gauge power cord recommended.

Specifications

Push/Pull	(R22)	25-lb/min
Direct Liquid	(R22)	7.80-lb/min
Vapor Rate	(R22)	0.62-lb/min
Weight		63-lbs (28.6kg)
Motor		Dual 0.5Hp
Connections		3/8-in. Flare
Dimensions	(LxWxH)	18-in. x 10-in. x 16-in.

Recovers Class III, IV and V refrigerants: R12, R22, R134A, R401A, R401B, R401C, R402A, R402B, R404A, R406A, R407A, R407B, R407C, R407D, R408A, R409A, R410A, R411A, R411B, R412A, R500, R502, R507, R509.

ServiceFirst Item Number	RefTec Model Number	Power Options
TOL01144	RTO-500-115-F	115/60/1, 110/50/1, (2) 0.5Hp, 15A
TOL01145	RTO-500-240-F	230/60/1, 220/50/1, (2) 0.5Hp, 10A



MityVac



MityVac offers the highest recovery capacity of any 115V unit. A 1.5Hp open drive compressor and 1/2" lines provide rapid recovery on chillers, supermarket racks, and other larger volume cooling systems.

Its high capacity 700-cfm fan and oversized coil remove more heat from recovered refrigerant to ensure fast recovery on hot days and larger jobs.

Accelerates Recovery Procedures to Save Labor and Reduce Cooling System Downtime

- 1.5 Hp open drive compressor, 1/2" lines, high capacity fan, and two point vapor extraction move refrigerant at sizzling rates.

Rugged Design for Greater Service Life and Durability

- Services R12, R22, R134a, R500, R502, R507, R409, MP39 and other high pressure refrigerants and blends.
- Open drive compressor is virtually impervious to the acids and contaminants that burn out hermetic compressors.

Simple Operating Procedures

- On the ELECTROMECHANICAL model, purging lines and switching from liquid to vapor recovery modes simply involves turning 3 valves -- no switching of hoses is necessary.

Safety Features

- High pressure shut off at 450-psi
- Low pressure shut-off at 15-in. Hg
- Tank float cable connection

Included with Purchase

- Two 30-cubic inch in-line filters
- 50-ft 12-gauge power cord
- 12-ft tank float cable
- Two 1/2" flare swivels

Accessories

- 10 and 20-ft 1/2-in. Hoses with ball valves (2 each required)
- 250-lb and 1000-lb recovery tanks
- Spare 30-cubic inch in-line filters
- Hose Manifolds

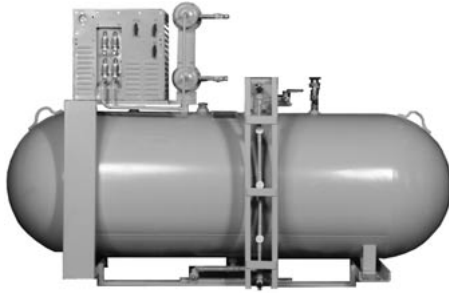
Note: MityVac requires four 1/2" hoses which are not included. See accessories on page 17.

Specifications

Push/Pull	(R22)	55-lb/min
Vapor Rate	(R22)	1.56-lb/min
Weight	Electromechanical	100-lbs (45.5kg)
Motor		1.5Hp
Connections		1/2-in. Flare
Dimensions	(LxWxH)	19-in. x 14-in. x 21-in.

Recovers Class III, IV and V refrigerants: R12, R22, R134A, R401A, R401B, R401C, R402A, R402B, R404A, R406A, R407A, R407B, R407C, R407D, R408A, R409A, R410A, R411A, R411B, R412A, R500, R502, R507, R509.

ServiceFirst Item Number	RefTec Model Number	Power Options	
TOL01152	MRH-115-E	115/60/1, 110/50/1, 1.5Hp, 15A	Electromechanical Controls
TOL01154	MRH-240-E	230/60/1, 220/50/1, 1.5Hp, 15A	Electromechanical Controls



MityVac/ASME Package Unit Complete Pump-Out and Storage Package

MityVac/ASME Package Unit is integrated with either a 250 or 500 gallon ASME tank for total pumpout and storage capability. Multiple voltage and condensing options are available.

Features

- Unit is hard piped and permanently mounted on ASME tank
- System is mounted on casters for mobility
- Dual 250-psi pressure relief valves on diverting valve
- Pressure gauge

- Sight glass tube shown will no longer be external. There will be three 1" sight glasses mounted directly onto the tank.
- 80% tank full float switch and 6-ft. cable
- Bottom drain connection
- Liquid and Vapor ports: 1/2" threaded connections with isolation ball valves (two recovery hoses included)
- 235-psi high pressure shut-off and 15-in Hg vacuum low pressure shut off
- Service R12, R22, R500, R502 and R134a
- ETL and PED certified
- Casters are included

Included with unit:

- Two 48-cubic inch filter driers
- 50-ft 12-gauge power cord
- Two 20-ft. hoses
- 6-ft tank float cable
- Four casters

Specifications

Push/Pull	(R22)	55-lb/min
Vapor Rate	(R22)	1.56-lb/min
Weight	250-gal	850-lbs (386-kg)
	500-gal	1400-lbs (636-kg)
Motor		1.5 Hp
Connections		1/2-in. Flare
Dimensions	(LxWxH) 250-gal	94" x 66" x 38"
	(LxWxH) 500-gal	113" x 73" x 45"

Refrigerant Capacity: 80% full in pounds

Tank	Gal	R12	R22	R500	R502	R134a
250	250	2195	2000	2034	2039	2015
500	500	4390	4000	4068	4078	4030

SF Part #	ServiceFirst Model Number	RefTec Model number	Capacity/ Cooling	Power Options
TOL01792	RRJA112A0A0	MRH-115-A-250	250-gal/Air	103-127V,50/60Hz,1Ph,1.5Hp,20A
TOL01793	RRJA112B0A0	MRH-240-A-250	250-gal/Air	220-240V,50/60Hz,1Ph,1.5Hp,15A
TOL01794	RRKA112A0A0	MRH-115-A-500	500-gal/Air	103-127V,50/60Hz,1Ph,1.5Hp,20A
TOL01795	RRKA112B0A0	MRH-240-A-500	500-gal/Air	220-240V,50/60Hz,1Ph,1.5Hp,15A
TOL01796	RRJA312A0A0	MRH-115-W-250	250-gal/Water	103-127V,50/60Hz,1Ph,1.5Hp,20A
TOL01797	RRJA312B0A0	MRH-240-W-250	250-gal/Water	220-240V,50/60Hz,1Ph,1.5Hp,15A
TOL01798	RRKA312A0A0	MRH-115-W-500	500-gal/Water	103-127V,50/60Hz,1Ph,1.5Hp,20A
TOL01799	RRKA312B0A0	MRH-240-W-500	500-gal/Water	220-240V,50/60Hz,1Ph,1.5Hp,15A



EVAC Commercial



Electromechanical Model

A rugged 3 or 5 Hp open drive compressor and air cooled condenser speedily transfer refrigerant in the poorest of conditions. EVAC Commercial is many times faster than other portable systems and is ideal for chillers of all sizes as well as larger refrigeration systems.

Rugged Design for Greater Service Life

- Services R12, R22, R134a, R500, R502 and other high pressure refrigerants and blends.
- Open drive compressor is virtually impervious to the acids and contaminants that burn out hermetic compressors. Equipped with in-line oil separator.

Simple Operating Procedures

- On the ELECTROMECHANICAL model, purging lines and switching from liquid to vapor recovery modes simply involves switching a hose and turning 3 valves.

Safety Features

- High pressure shut-off at 425-psi
- Low pressure shut-off at 15-in. Hg
- Tank float cable connection

Included with Purchase

- Filter Driers:
 - (1) 48-in³ drier core
- 100-ft power cord for controls
- 50-ft power cord for recovery unit
- Recovery hoses:
 - (2) 3/4" x 10-ft
 - (1) 3/4" x 20-ft
- Two each 3/4-5/8" and 5/8-1/2" reducing fittings
- 12-ft tank float switch cable

Accessories (see page 18)

- 250-lb and 1000-lb recovery tanks
- 250 and 500 gallon ASME tanks
- Spare 48-cubic inch drier cores
- Hose manifolds

Specifications

Push/Pull*	R22	325-lb/min
Vapor Rate*	R22	6-lb/min
Final Vacuum	R22	15-in. Hg
Connections		3/4-in. flare with ball valves
Power: Controls		115/60/1, 110/50/1, 15A
Dimensions	(L x W x H)	32" (813mm) x 29" (737mm) x 45" (1143mm)

* Recovery rates on air cooled unit

ServiceFirst Item Number	RefTec Model Number	Power Options	Controls/Cooling	Weight
TOL01159	CRH-A-230-3-E	230/60/3, 220/50/3, 3Hp, 15A	Electromechanical Controls, Air Cooled	275-lb
TOL01161	CRH-A-240-1-E	230/60/1, 220/50/1, 3Hp, 20A	Electromechanical Controls, Air Cooled	275-lb
TOL01163	CRH-A-460-3-E	460/60/3, 415/50/3, 3Hp, 15A	Electromechanical Controls, Air Cooled	275-lb
TOL01165	CRH-A-D24-1-E	230-460/60/1, 220-415/50/1, 5Hp, 30/20A	Electromechanical Controls, Air Cooled	305-lb
TOL01167	CRH-A-575-3-E	575/60/3, 3Hp, 10A	Electromechanical Controls, Air Cooled	275-lb
TOL01169	CRH-W-230-3-E	230/60/3, 220/50/3, 3Ph, 3Hp, 15A	Electromechanical Controls, Air/Water Cooled	300-lb
TOL01171	CRH-W-240-1-E	230/60/1, 220/50/1, 3Hp, 20A	Electromechanical Controls, Air/Water Cooled	300-lb
TOL01173	CRH-W-460-3-E	460/60/3, 415/50/3, 3Hp, 15A	Electromechanical Controls, Air/Water Cooled	300-lb
TOL01175	CRH-W-575-3-E	575/60/3, 3Hp, 10A	Electromechanical Controls, Air/Water Cooled	300-lb
TOL01177	CRH-W-D24-1-E	230-460/60/1, 220-415/50/1, 5Hp, 30/20A	Electromechanical Controls, Air/Water Cooled	330-lb

* Air/Water Cooled option includes a supplemental water cooled condenser in addition to the air cooled condenser

LoVac



Electromechanical Model

LoVac's rugged 2-Hp open drive compressor and air cooled condenser speedily transfer refrigerant in the poorest of conditions. The open drive design offers lighter weight and stands up better to noncondensable contamination than a vacuum pump.

Rugged Design for Greater Service Life

- Services R11, R113 and R123.
- Open drive compressor is virtually impervious to the acids and contaminants that burn out hermetic compressors.

Simple Operating Procedures

- On the ELECTROMECHANICAL model, purging lines and switching from liquid to vapor recovery modes simply involves switching a hose and turning 3 valves.
- Each model automatically shuts off at 29-in. Hg vacuum in the cooling system.

Safety Features

- High head pressure shut-off at 20-psi
- Low pressure shut-off at 29-in. Hg
- Tank float cable connection

Included with Purchase

- Filter Driers: (1) 48-in³ drier core
- 50-ft power cord
- Recovery hoses:
(2) 3/4"x10-ft
(1) 3/4"x20-ft
- Two each 3/4-5/8" and 5/8-1/2" reducing fittings
- 12-ft tank float switch cable

Accessories (see page 18)

- 250-lb and 1000-lb recovery tanks
- 250 and 500 gallon ASME tanks
- Spare 48-cubic inch drier cores
- Hose manifolds

Specifications

Push/Pull*	R11	100-lb/min
Vapor Rate*	R11	0.66-lb/min
Final Vacuum	R11	29-in. Hg
Dimensions	(L x W x H)	26" (660mm) x 25" (635mm) x 45" (1143mm)

* Recovery rates on air cooled model

ServiceFirst Item Number	RefTec Model Number	Power Options	Controls/Cooling	Connections	Weight
TOL01189	CRL-A-115-E	115/60/1, 110/50/1, 2.0Hp, 20A	Electromechanical Controls, Air Cooled	3/4" Flare with ball valve	186-lb
TOL01190	CRL-A-115-E-QC	115/60/1, 110/50/1, 2.0Hp, 20A	Electromechanical Controls, Air Cooled	Quick Connects	189-lb
TOL01193	CRL-A-240-E	230/60/1, 220/50/1, 2.0Hp, 15A	Electromechanical Controls, Air Cooled	3/4" Flare with ball valve	186-lb
TOL01194	CRL-A-240-E-QC	230/60/1, 220/50/1, 2.0Hp, 15A	Electromechanical Controls, Air Cooled	Quick Connects	189-lb
TOL01197	CRL-W-115-E	115/60/1, 110/50/1, 2.0Hp, 20A	Electromechanical Controls, Air/Water Cooled*	3/4" Flare with ball valve	211-lb
TOL01198	CRL-W-115-E-QC	115/60/1, 110/50/1, 2.0Hp, 20A	Electromechanical Controls, Air/Water Cooled*	Quick Connects	213-lb
TOL01201	CRL-W-240-E	230/60/1, 220/50/1, 2.0Hp, 15A	Electromechanical Controls, Air/Water Cooled*	3/4" Flare with ball valve	211-lb
TOL01202	CRL-W-240-E-QC	230/60/1, 220/50/1, 2.0Hp, 15A	Electromechanical Controls, Air/Water Cooled*	Quick Connects	214-lb

* Air/Water Cooled option includes a supplemental water cooled condenser in addition to the air cooled condenser

AllVac



No need to buy multiple systems to recover different refrigerants. AllVac's modified 3 or 5 Hp open drive compressor conveniently services both high and low pressure refrigerants. Ideal for chillers of all types as well as larger commercial refrigeration applications. Switching between refrigerants simply involves oil and filter changes along with the evacuation of the unit.

Rugged Design for Greater Service Life

- Services R11, R113 and R123, as well as R12, R22, R134a, R500, R502, R404, R407 and other high pressure refrigerants and blends.
- Open drive compressor is virtually impervious to the acids and contaminants that burn out hermetic compressors.
- Air/water cooled option incorporates a water-cooled plate exchanger in series with the air-cooled condenser. This model may operate with or without condensing water.

Safety Features

- High head pressure shut-off at 425-psi or 20-psi.
- Low pressure shut-off at 15-in. Hg or 29-in. Hg vacuum.
- Tank float cable connection

Included with Purchase

- (1) 48-in³ drier core
- 100-ft power cord for controls
- 50-ft power cord for recovery unit
- Recovery Hoses:
 - (2) 3/4" x 10 ft
 - (1) 3/4" x 20 ft
- Two each 3/4-5/8" and 5/8-1/2" reducing adapters
- 12-ft tank float switch cable

Accessories (see page 18)

- 250-lb and 1000-lb recovery tanks
- 250 and 500 gallon ASME tanks
- Spare 48-cubic inch drier core
- Hose manifolds

Specifications

Push/Pull*	R22	325-lb/min
	R11	100-lb/min
Vapor Rate*	R22	6-lb/min
	R11	0.66-lb/min
Final Vacuum	R22	15-in. Hg
	R11	29-in. Hg
Connections	3/4-in. flare with ball valves	
Power: Controls	115/60/1, 110/50/1, 15A	
Dimensions (L x W x H)	32" (81 cm) x 29" (74 cm) x 45" (1214 cm)	

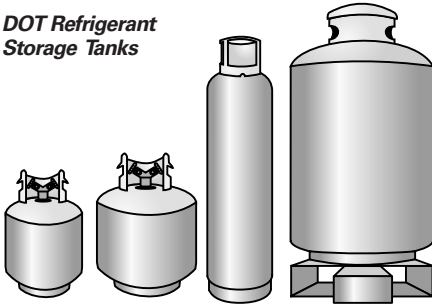
* Recovery rates on air cooled unit

ServiceFirst Item Number	RefTec Model Number	Power Options	Controls/Cooling	Weight
TOL01835	ARH-A-230-3-E	220-240V,50/60Hz,3Ph,3Hp,15A	Electromechanical Controls, Air Cooled	275
TOL01836	ARH-A-240-1-E	220-240V,50/60Hz,1Ph,3Hp,20A	Electromechanical Controls, Air Cooled	275
TOL01837	ARH-A-460-3-E	360-575V,50/60Hz,3Ph,3Hp,15A	Electromechanical Controls, Air Cooled	275
TOL01838	ARH-A-575-3-E	575V,60Hz,3Ph,3Hp,10A	Electromechanical Controls, Air Cooled	305
TOL01839	ARH-A-D24-1-E	230/460V,50/60Hz,1Ph,5Hp,30/20A	Electromechanical Controls, Air Cooled	275
TOL01840	ARH-W-230-3-E	220-240V,50/60Hz,3Ph,3Hp,15A	Electromechanical Controls, Air/Water Cooled	300
TOL01841	ARH-W-240-1-E	220-240V,50/60Hz,1Ph,3Hp,20A	Electromechanical Controls, Air/Water Cooled	300
TOL01842	ARH-W-460-3-E	360-480V,50/60Hz,3Ph,3Hp,15A	Electromechanical Controls, Air/Water Cooled	300
TOL01843	ARH-W-575-3-E	575V,60Hz,3Ph,3Hp,10A	Electromechanical Controls, Air/Water Cooled	300
TOL01844	ARH-W-D24-1-E	230/460V,50/60Hz,1Ph,5Hp,30/20A	Electromechanical Controls, Air/Water Cooled	330

Air/water cooled option includes a supplemental water cooled condenser in addition to the air cooled condenser

Refrigerant Recovery Cylinders and Storage Tanks

DOT Refrigerant Storage Tanks



- Typical recovery tanks have small diameter ports that restrict refrigerant flow and slow your recovery procedures. 250 and 1000-lb D.O.T. tanks have been fitted with full port 3/4" service valves and copper dip tubes that eliminate restrictions and allow faster refrigerant transfer.

- For R11, R12, R22, R113, R114, R123, R134a, as well as additional high pressure refrigerants and blends.
- Quick connects are available for tanks servicing low pressure refrigerants only.
- Band heaters are available for distillation capabilities. See accessories (page 18).

ServiceFirst Item Number	RefTec Model Number	Description	Port Size	Dry Weight	Dimensions (O.D.x L)	Working Pressure	Relief Setting
CYL00178	CYL-1000	1000# Tank only	3/4"	358-lbs	30" x 58"	260 psi	420-450 psi
CYL00179	CYL-1000-LS	1000# w/80% shut off switch	3/4"	359-lbs	30" x 58"	260 psi	420-450 psi
CYL00180	CYL-1000-QC	1000# Tank w/quick connects	3/4"	359-lbs	30" x 58"	260 psi	420-450 psi
CYL00181	CYL-1000-LS-QC	1000# Tank w/switch and quick connects	3/4"	360-lbs	30" x 58"	260 psi	420-450 psi
CYL00182	CYL-0250	250# Tank only	3/4"	86-lbs	15" x 49"	260 psi	420-450 psi
CYL00183	CYL-0250-LS	250# w/80% shut off switch	3/4"	87-lbs	15" x 49"	260 psi	420-450 psi
CYL00184	CYL-0250-QC	250# Tank w/quick connects	3/4"	87-lbs	15" x 49"	260 psi	420-450 psi
CYL00185	CYL-0250-LS-QC	250# Tank w/switch and quick connects	3/4"	88-lbs	15" x 49"	260 psi	420-450 psi
CYL00186 (1)	—	50# Tank only	1/4"	28-lbs	12.5" x 19"	400 psi	600 psi
CYL00187 (1)	—	50# w/ 80% shut off switch	1/4"	28-lbs	12.5" x 19"	400 psi	600 psi
CYL00188	—	30# Tank only	1/4"	16-lbs	9" x 18"	350 psi	600 psi
CYL00189	—	30# w/ 80% shut off switch	1/4"	16-lbs	9" x 18"	350 psi	600 psi

Note: (1) 50-lb cylinders only are approved for use with R410a.

ASME Refrigerant Storage Tanks



- Mounted on casters
- Dual pressure relief valves on diverting valve (50-psi relief on low pressure tanks / 250-psi relief on high pressure tanks)
- Pressure gauge
- Sight glass tube
- 80% tank full float switch
- Bottom drain connection
- Liquid and Vapor ports: Threaded connections with isolation ball valves are supplied standard. Ball valves may be substituted with quick connect fittings on low pressure R11/R123 tanks only. 3/4" connections are recommended if using Lovac, Allvac, or Evac Commercial recovery units.

Options (see accessories page 17):

- Cable for Liquid level cut out switch
- Heating Bands for distillation

Note: Sight glass tube shown will no longer be external. There will be three 1" sight glasses mounted directly on the tank.

ServicePart Part Number	Reftec Model Number	capacity	features	pressure
TNK00837	ASME-250-075-HP	250-Gallon	3/4" Flare with Ball Valves	High Pressure
TNK00838	ASME-250-075-LP	250-Gallon	3/4" Flare with Ball Valves	Low Pressure
TNK00839	ASME-250-075-LP-QC	250-Gallon	3/4" Ports w/Quick Connects	Low Pressure
TNK00842	ASME-500-075-HP	500-Gallon	3/4" Flare with Ball Valves	High Pressure
TNK00843	ASME-500-075-LP	500-Gallon	3/4" Flare with Ball Valves	Low Pressure
TNK00844	ASME-500-075-LP-QC	500-Gallon	3/4" Ports w/Quick Connects	Low Pressure

	ASME250	ASME500
Length	94-in	113-in
Diameter	30-in	37-in
Height	42-in	49-in

Tank Model	Gal	Dry Wgt	Refrigerant Capacity at 80%						
			R12	R22	R500	R502	R134a	R11	R123
ASME-250	250	650-lb	2,195	2,000	2,034	2,039	2,015	2,459	2,440
ASME-500	500	1200-lb	4,390	4,000	4,068	4,078	4,030	4,918	4,880

Accessories

Recovery Hoses

ServiceFirst Item Number	RefTec Model Number	Diameter x Length	Connection/Isolation
HSE01126	—	1/4" x 10-ft	Flare with no isolation
HSE01347	025-006-B-HP-FB	1/4" x 6-ft	Flare with ball valves, red
HSE01348	025-006-R-HP-FB	1/4" x 6-ft	Flare with ball valves, blue
HSE01128	025-020-HP	1/4" x 20-ft	Flare with no isolation
HSE01129	025-020-HP-FB	1/4" x 20-ft	Flare with ball valves
HSE01130	—	3/8" x 10-ft	Flare with no isolation
HSE01131	038-010-HP-FB	3/8" x 10-ft	Flare with ball valves
HSE01132	—	3/8" x 20-ft	Flare with no isolation
HSE01133	038-020-HP-FB	3/8" x 20-ft	Flare with ball valves
HSE01214	—	1/2" x 10-ft	Flare with no isolation
HSE01135	050-010-HP-FB	1/2" x 10-ft	Flare with ball valves
HSE01136	—	1/2" x 20-ft	Flare with no isolation
HSE01137	050-020-HP-FB	1/2" x 20-ft	Flare with ball valves
HSE01252	—	3/4" x 10-ft	Flare with no isolation
HSE01139	075-010-HP-FB	3/4" x 10-ft	Flare with ball valves
HSE01140	075-010-HP-QC	3/4" x 10-ft	Quick connects
HSE01253	—	3/4" x 20-ft	Flare with no isolation
HSE01142	075-020-HP-FB	3/4" x 20-ft	Flare with ball valves
HSE01143	075-020-HP-QC	3/4" x 20-ft	Quick connects

Recovery Manifolds

ServiceFirst Item Number	RefTec Model Number	Description
MFD00901	RM-075-6	Six 3/4-inch flare ports with ball valves
MFD00902	RM-050-6	Six 1/2-inch flare ports with ball valves

Float Cable

ServiceFirst Item Number	RefTec Model Number	Description
CAB00880	FVC-006	6-ft float cable with 3-pin Brad Harrison connectors
CAB00881	FVC-012	12-ft float cable with 3-pin Brad Harrison connectors
CAB00882	FVC-3T4	3-pin Brad Harrison to 4-pin AMP connector

Quick Connects

ServiceFirst Item Number	RefTec Model Number	Description
CON00996	QC-075-M	3/4-inch male quick connect fitting
CON00997	QC-075-F	3/4-inch female quick connect fitting

Filter Driers

ServiceFirst Item Number	RefTec Model Number	Description	fits:
DHY00816	—	3 cubic inch, 1/4" flare, in-line	Microvac
FLR02746	FD-005-38	5 cubic inch, 3/8" flare, in-line	Handivac
FLR02742	FD-030-50	30 cubic inch, 1/2" flare, in-line	MityVac
FLR02745	FD-048-CR	48 cubic inch, replaceable core	EVAC Comm/EVAC Indy/Lovac/Allvac Electromechanical Models

Band Heaters

ServiceFirst Item Number	RefTec Model Number	Description	Features
HTR04356	HB-10X094-1-1880	Heater Band for 30" dia. 250-gal ASME and 1000-lb DOT tanks	10" x 94", 1880W, 120V- 100 DEG. F CUT OFF
HTR04357	HB-10X094-2-1880	Heater Band for 30" dia. 250-gal ASME and 1000-lb DOT tanks	10" x 94", 1880W, 240V- 100 DEG. F CUT OFF
HTR04358	HB-10X115-1-1880	Heater Band for 37" dia. 500-gal ASME tank	10" x 115", 1880W, 120V- 100 DEG. F CUT OFF
HTR04359	HB-10X115-2-1880	Heater Band for 37" dia. 500-gal ASME tank	10" x 115", 1880W, 240V- 100 DEG. F CUT OFF

Silicone rubber band heaters install on refrigerant tanks to perform distillation. Self limiting at 100 F.

Hoses are compatible with R11, R12, R22, R113, R123, R134a, R500, R502, and other high pressure refrigerants and blends. No hoses may be used on ultra high pressure types like R13 and R23. 3/4-inch diameter hoses must not be used to recover R410a.

Connection options include flare fittings, ball valves, NPT, and quick connects. Hoses with quick connects are used only on low pressure hoses.

Recovery Unit Hose Guide

MicroVac:	1/4" hoses
HandiVac	3/8" or 1/4" hoses
MityVac:	1/2" hoses
EVAC Commercial	3/4" hoses
Lovac	3/4" hoses
AllVac	3/4" hoses

Manifolds split lines to allow 6 connections for simultaneous recovery of multiple tanks or systems



Scale drawing of 3-pin connector supplied on RefTec equipment.

MiniPurge



MiniPurge portable purge unit temporarily connects to chillers and storage tanks charged with high or low pressure refrigerants and rapidly eliminates noncondensibles. Unit is ideal for supplementing thermal purge units during seasonal start ups on R11 or R123 chillers.

A 0.5 Hp compressor draws refrigerant vapor, pumps it through a condenser, and compresses it in a purge vessel. Condensed refrigerant is forced back to the cooling system or recovery tank. When pressure rises to a certain point, noncondensibles are discharged with virtually no loss of refrigerant.

Universal Compatibility

- Eliminates air from high or low pressure refrigerants.
- Simply evacuate the unit when switching to different refrigerants

Highly Portable

- At just 65-lbs in weight, MiniPurge is the lightest purge unit on the market and is easily hand carried to contaminated cooling systems.

Fast Purge Speed

- Compressor drives the purge process by actively drawing, processing, and returning refrigerant to the cooling system.

Higher Efficiency for Better Refrigerant Containment

- Vapor passes through a high capacity air cooled condenser and is then compressed in the purge vessel to thoroughly condense refrigerant and separate noncondensibles. Microprocessor controls calculate the most efficient time to discharge noncondensibles.

Safeties

- 300-psi relief on high pressure gases and 100-psi pressure switch cut off on low pressure gases.

Specifications

Discharge Efficiency	R134a R123	0.20 lb-refrigerant/lb-noncondensibles 0.08 lb-refrigerant/lb-noncondensibles
Dimensions:	LxWxH	18" x 10" x 16"
Weight:		65-lb
Connections:		3/8-in. Flare
Recovers R11, R123, R12, R134a, R22, R507		

ServiceFirst	RefTec Model	
Item Number	Number	Electrical Requirements
TOL01227	MPS-115	115/60/1, 110/50/1, 0.5Hp, 15A
TOL01228	MPS-240	230/60/1, 220/50/1, 0.5Hp, 15A



HyperWatt



Portable Service Cart

Faster Speed of Pressurization

- Cycles chiller water at up to 20-gpm through 30kW vessel.

Easy to Use

- Microprocessor displays step-by-step operating instructions.
- When desired chiller pressure level is reached, the pump shuts down. Automatically re-energizes to maintain stable pressure.

Safeguards Protect Chiller and Components

- Microprocessor monitors chiller pressure and prevents overpressurization.
- Thermal sensors prevent heating element overload and burnout.
- Sensor halts operations should water flow cease.

Portable and Permanent Mount Models

- Handy 125-lb portable model easily managed by one person and maneuvered around tight mechanical rooms.
- Permanent mount unit is hard piped to a chiller. Maintains the chiller at slightly positive pressure during seasonal shutdown.

Dual 230/460V unit: Heating capacity decreases by about 50% on 230V service.

Included with purchase (Service Cart model only)

- 100-ft power cord for controls
- 50-ft power cord for heaters
- 20-ft 1/4" refrigerant hose
- Two 10-ft water hoses

On permanent mount model, customer supplies power cord, piping and fittings.

Specifications

Power controls and water pump:	115/60/1, 110/50/1, 15A
Dimensions (LxWxH)	20" L x 22" W x 51" H
Weight:	125-lb
Pressure settings:	0 to 10-psi

ServiceFirst Item Number	RefTec Model Number	Electrical Req.	Models
TOL01242	HPS-C-575-3	575/60/3, 40A	Service Cart
TOL01243	HPS-C-D24-3	230-460/60/3,220-415/50/3, 20/40A	Service Cart
TOL01244	HPS-P-575-3	575/60/3, 40A	Permanent Mount
TOL01245	HPS-P-D24-3	230-460/60/3,220-415/50/3, 20/40A	Permanent Mount



EnviroPump

Refrigerant Heating Chiller Pressurizer

Features

- Water Heaters cannot effectively pressurize a large tonnage R123 chiller. After hours or days, they only succeed in chasing refrigerant into the condenser and generating a scant 2-3 psi of internal pressure. In that time, they often heat the chiller barrel to a point where the metal expands and seals leak.
- With faster and more efficient heat transfer, EnviroPump does not cause refrigerant to simply migrate and recondense in the condenser. Leaks are easily identified with up to 10-psi of internal pressure being generated in only a few hours.
- 16-gpm liquid pump draws chiller refrigerant and pumps it through a vessel holding 16 kW heating elements, which are self limited at 240°F to prevent burn outs and refrigerant degradation.
- 16 kW heater generates a 50°F temperature differential to quickly raise temperature inside the evaporator and pressurize the chiller.

- Unit halts when preselected chiller pressure level is achieved and automatically restarts to maintain stable pressure.
- On-board vacuum pump evacuates hoses and system before and after use to prevent air contamination and refrigerant loss.

Included With Purchase

- One 10-ft. x 3/4" refrigerant hose.
- One 20-ft. x 3/4" refrigerant hose.
- 100-ft. controls power cord.
- 50-ft. heater power cord.
- 1/4" x 20-ft. pressure sampling hose.

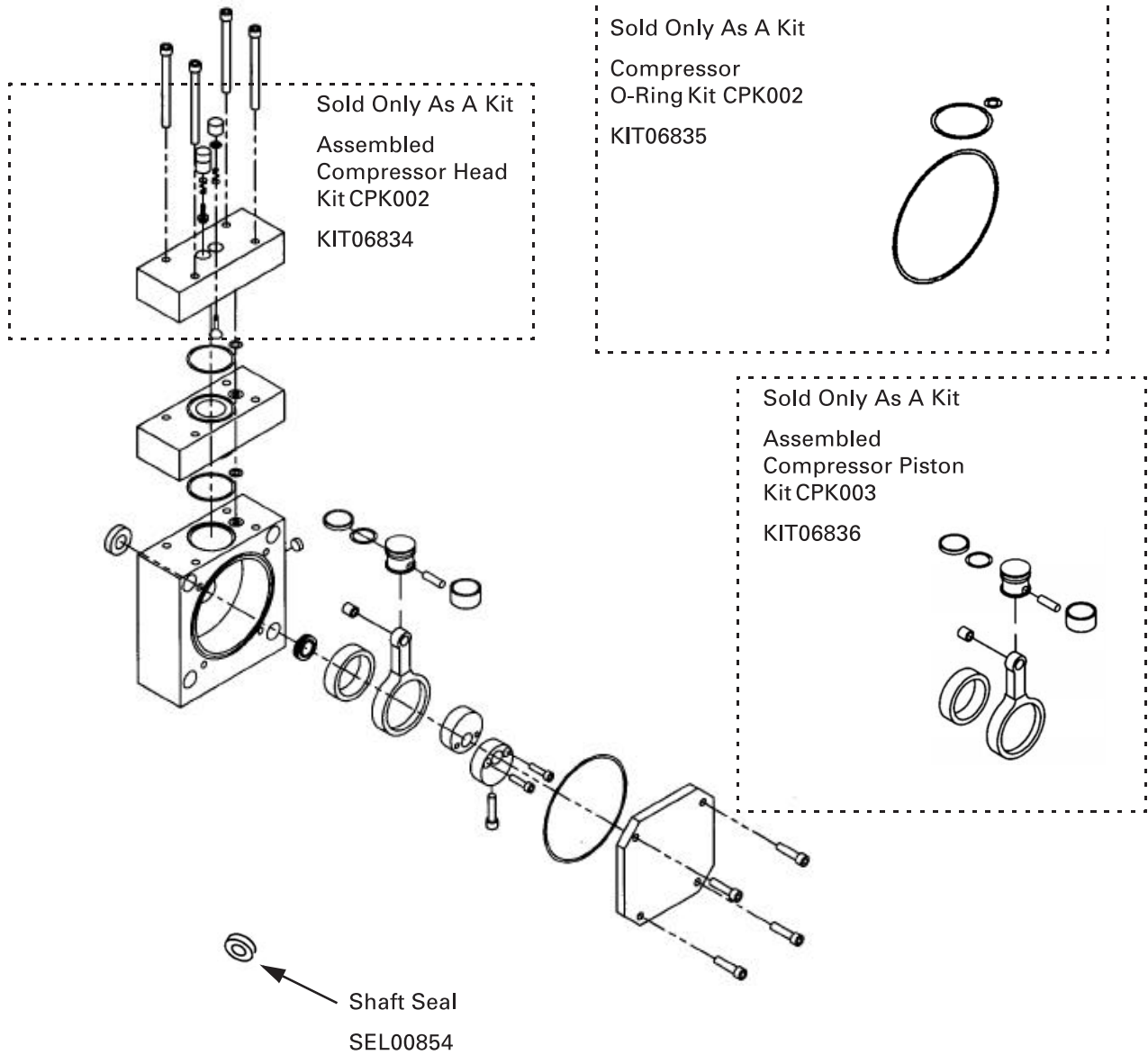
Specifications

Power Controls	115/60/1, 110/50/1, 15A
Dimensions (L x W x H)	26" L x 25" W x 38" H
Weight	175-lb
Pressure Settings	0 to 10-psi
Heating Elements	16 kW, 240°F self limiting
Liquid Pump	16-gpm
Vacuum Pump	7-cfm direct drive

ServiceFirst Item Number	RefTec Model Number	Power Options	Connections
TOL01736	EPS-D24-3	230-460/60/3, 220-415/50/3, 20/40A	3/4" Flare with ball valves
TOL01737	EPS-D24-3-QC	230-460/60/3, 220-415/50/3, 20/40A	Quick Connects
TOL01738	EPS-575-3	575/60/3, 40A	3/4" Flare with ball valves
TOL01739	EPS-575-3-QC	575/60/3, 40A	Quick Connects

Note: Included with the unit are two refrigerant hoses, controls power cord, heater power cord and 1/4" x 10-ft. pressure sampling hose.

Exploded View Compressor Diagram



Complete Compressor Rebuilt Kit
KIT07290 (Includes KIT06834, KIT06835,
KIT06836 and SEL00854)
Compressor Demo Unit COM07231



Literature Order Number	RSP-PRC002-EN
Filing Hierarchy	Service Products/Tool and Test Equipment/Refrigerant Handling
Date	June 2002
Supersedes	RSP-PRC002-EN 1000
Stocking Location	La Crosse

Trane has a policy of continuous product and product data improvement and reserves the right to change design and specifications without notice.